

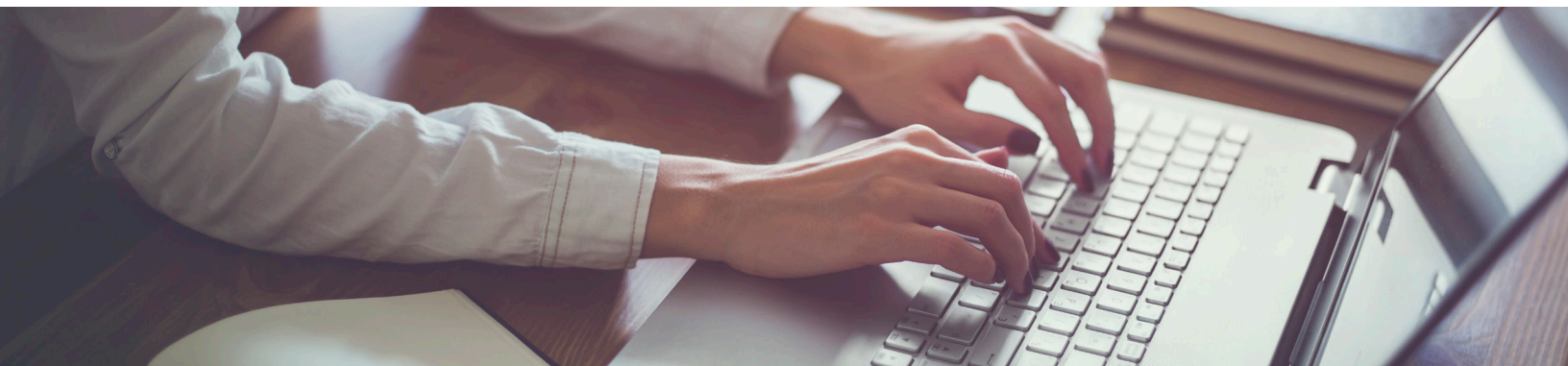


DSI Course Catalog Q1 2020





DSI Course Catalog Q1 2020



DSI Enablement Course Catalog

This catalog lists all of the customer training courses and Multi-Media Learning Modules (MLMs) provided by DSI Enablement. Courses are provided in either the Self-Paced Online format or as Instructor Led Training. Some courses are provided in both formats. The format(s) available are noted under the course descriptions.

This document is updated with new course information each quarter. Please see the version information at the bottom of each page to ensure you are looking at the most recent version.

Courses are organized by course number:

- 100 level: Administration
- 200 level: Standard application development
- 300 level: Advanced application development with an emphasis on UI
- 500 level: IFS specific courses including Administration and Development (instructor led format only)

Registering for DSI Training

DSI customers, business partners, and employees can register for both Self-Paced Online subscriptions and Instructor Led Training sessions on the DSI website here: <https://www.dsiglobal.com/trainingregistration>

Instructor Led Training Course Schedule

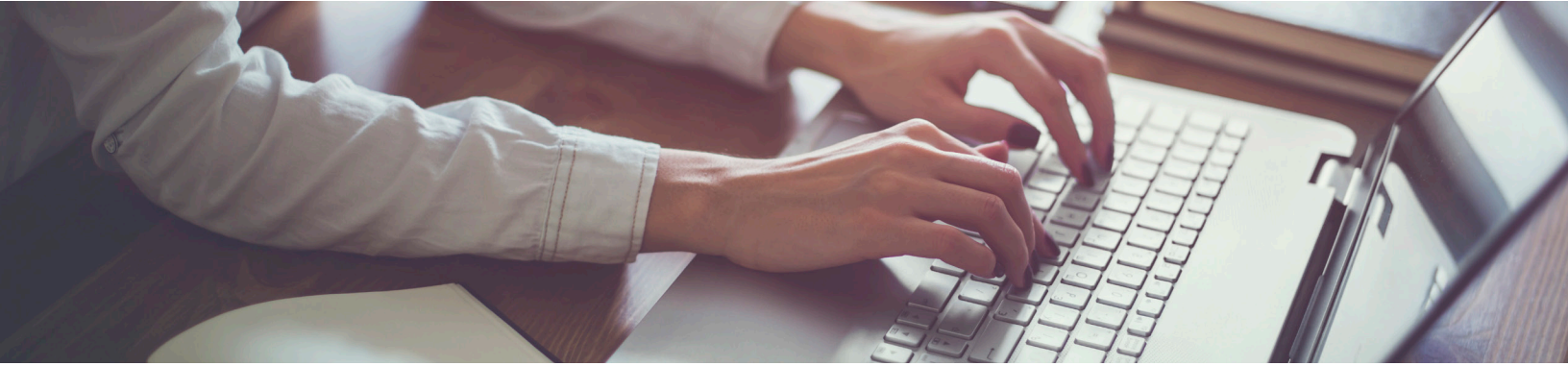
Instructor Led Training schedules are available on the DSI website here: <https://www.dsiglobal.com/customer-center/education/>

Questions, Comments, Concerns?

Visit the Education Community page on the DSI Community: <https://community.dsiglobal.com/communities/education>

OR

Email the DSI Enablement team: DL-Enablement@dsiglobal.com



DSI 101: 8.5 Platform Administration

- This course serves as an introduction to the DSI Platform 8.5 with an emphasis on administrative tasks including installation, configuration, users & security, back-up & restore, maintenance, and troubleshooting.
- Prerequisites: None
- Format: Self-Paced Only
- Interactive Components: Comprehensive quizzes consisting of multiple question formats like multiple choices, true/false, and matching

DSI 102: 9.0 Cloud Administration

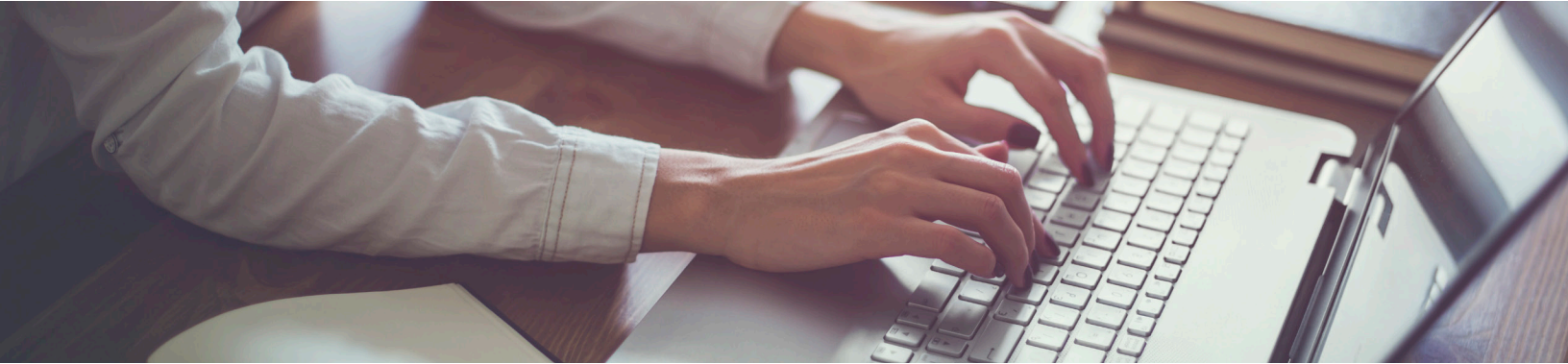
- This course is intended for existing DSI Cloud Platform administrators and technical users as well as those upgrading to the latest release of the DSI Platform for Cloud use or migrating to the DSI Cloud. This course covers the day-to-day administration topics of the DSI Cloud Platform including configuration, validation, users & security, and more.
- Prerequisites: None
- Format: Self-Paced Only
- Interactive Components: None

DSI 105: Platform Integration

- This technical level course is intended for DSI Platform administrators and technical users of the DSI Platform. It is highly recommended that you complete either DSI 101 or DSI 102 prior to taking this course. This course covers transaction types, transaction flow diagrams, and various DSI ERP connectors including JDE, NetSuite, SAP, and IFS ScanWorx. This course is intended for DSI Customers, Business Partners, and Employees.
- Prerequisites: DSI 101 or DSI 102
- Format: Self-Paced Only
- Interactive Components: None

DSI 130: Introduction to Cloud Inventory

- This course serves as an introduction to the DSI Platform 8.5 with an emphasis on administrative tasks including installation, configuration, users & security, back-up & restore, maintenance, and troubleshooting.
- Prerequisites: None
- Format: Self-Paced Only
- Interactive Components: None



DSI 131: Cloud Inventory Warehouse Operations

- Designed for operation and administrative users of the DSI Cloud Inventory product, this course covers Inquiry, Inbound, Inventory, Kitting, and Outbound operations, plus introductory administrative topics.
- Prerequisites: DSI 130
- Format: Self-Paced Only
- Interactive Components: None

DSI 132: Cloud Inventory Warehouse Management

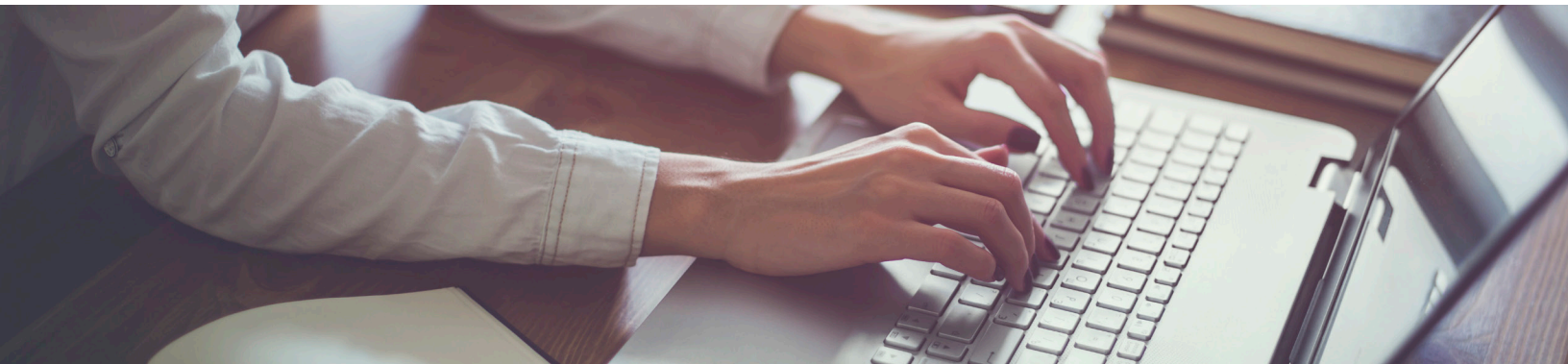
- Designed for DSI Cloud Inventory customers responsible for implementation, initial setup, configuration, and future maintenance, topics include Configuration Elements, Locations, Replenishment, Items, DSI Mobile Client, and additional functionality.
- Prerequisites: DSI 130 required & DSI 131 recommended
- Format: Self-Paced Only
- Interactive Components: None

DSI 141: Supply Chain Insights

- This course serves as an introduction to Supply Chain Insights, DSI's analytics tool. Topics include an emphasis on Platform Metrics and Operational Insights for SCPaaS, PaaS, and MEP customers.
- Prerequisites: None
- Format: Self-Paced Only
- Subscriptions: EPP or any active subscription
- Interactive Components: None

DSI 160: Enterprise Printing Platform

- This course serves as an introduction to the Enterprise Printing Platform. Topics include basic features, configuration, functionality, and installation. Additionally, the course covers label templates and print labels via the QuickLabel feature. Finally, this course also covers the Bridge Application and a basic introduction to the Label Designer.
- Prerequisites: None
- Format: Self-Paced Only
- Subscriptions: EPP or any active subscription
- Interactive Components: None



DSI 171: Direct for Netsuite

- This module serves as an introduction to the Administrative side of the Direct for Netsuite solution including application demo videos, technical specifications, installation, configuration, application bundles, and Mobile Client requirements.
- Prerequisites: None
- Format: Self-Paced Only
- Interactive Components: None

DSI 201: 8.5 Application Studio

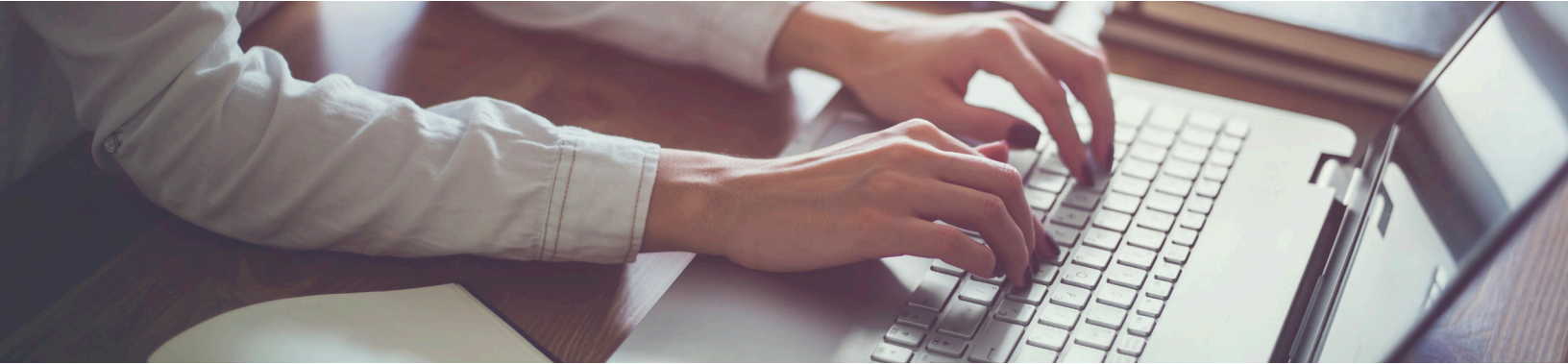
- The introductory application development course developed in the DSI Platform 8.5, covers basic app development including an introduction to the Application Studio and its related components. Labs include creation of Prompt\Response and Forms-based applications testable on Android, iOS, and Windows.
- Prerequisites: None
- Format: Self-Paced Only
- Interactive Components: Dedicated interactive labs and associated lab environment for lab development and testing

DSI 201: 9.0 Application Studio

- The introductory application development course developed in the DSI Platform 9, covers basic app development including an introduction to the Application Studio and its related components. Labs include creation of Prompt\Response applications testable in HTML5, Android, iOS, and Windows.
- Prerequisites: None
- Format: Self-Paced OR Instructor Led Training
- Interactive Components: Dedicated interactive labs and associated lab environment for lab development and testing

DSI 310: Introduction to Forms

- This course serves as an introduction to the DSI Platform 9's Forms and Form Editor. Topics covered include an overview of the Form Editor and what Forms-based applications are, as well as Form components including Form Controls, Data Controls, and Platform Views.
- Prerequisites: DSI 201: 9.0 Application Studio
- Format: Self-Paced Only
- Interactive Components: None



DSI 311: Form Development

- This advanced application development course focuses on creating more robust and complex Forms-based applications including data downloads, animations, loading multiple forms, and populating dynamic data. Labs include creating a single advanced application that becomes more sophisticated with each lab.
- Prerequisites: DSI 310 or DSI 201: 8.5 Application Studio
- Format: Self-Paced Only
- Interactive Components: Dedicated interactive labs and associated lab environment for lab development and testing

DSI 321: Introduction to Wire

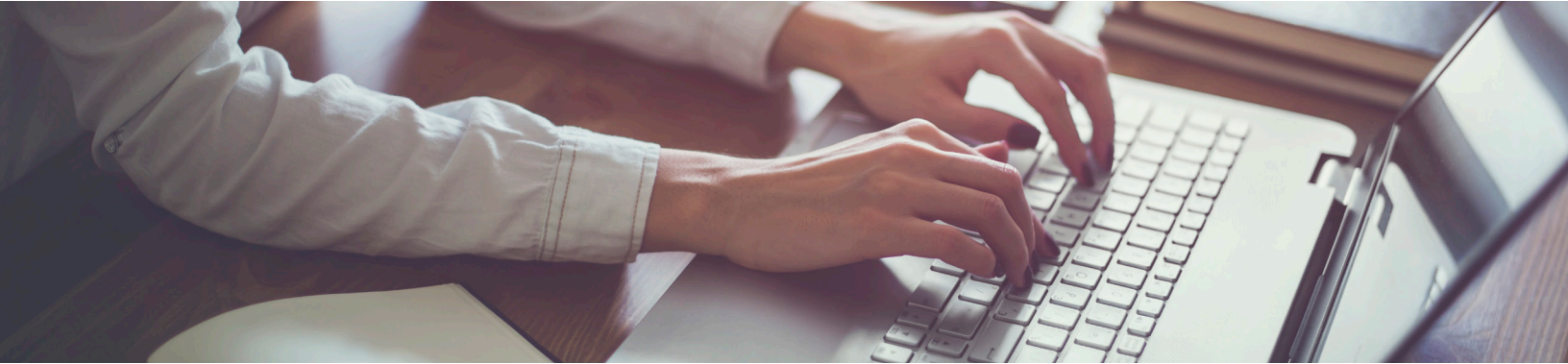
- This course serves as an introduction to Wire, DSI's code-based UI development language. Topics include an overview of the Wire language and using the language to develop an array of applications that return data to users.
- Prerequisites: DSI 201
- Format: Self-Paced Only
- Interactive Components: Dedicated interactive labs and associated lab environment for lab development and testing

DSI 322: Advanced Wire Development

- This advanced Wire development course builds on the topics in DSI 321 to lead students through creating a single robust and complex application with an emphasis on advanced UI features and animations as well as application promotion.
- Prerequisites: DSI 321
- Format: Self-Paced Only
- Interactive Components: Dedicated interactive labs and associated lab environment for lab development and testing

DSI 501: IFS Lobbies

- This hands-on instruction course will teach IFS Power Users and PL/SQL application developers to develop IFS Lobbies, Lobby Elements, and Lobby Data Sources. Any IFS Power User or PL/SQL developer who is responsible for creating Lobbies with your IFS system would benefit from this class.
- Prerequisites: None
- Format: Instructor Led Training Only



DSI 502: LabelWorks

- This class will review how IFS ERP utilizes Oracle database objects and how to create events, custom menus, and objects to take this data and send it to your print engine to create labels. The training class will utilize the DSI print engine called EPP with two different label printers.
- Prerequisites: None
- Format: Instructor Led Training Only

DSI 511: Oracle PL/SQL Programming for IFS Applications

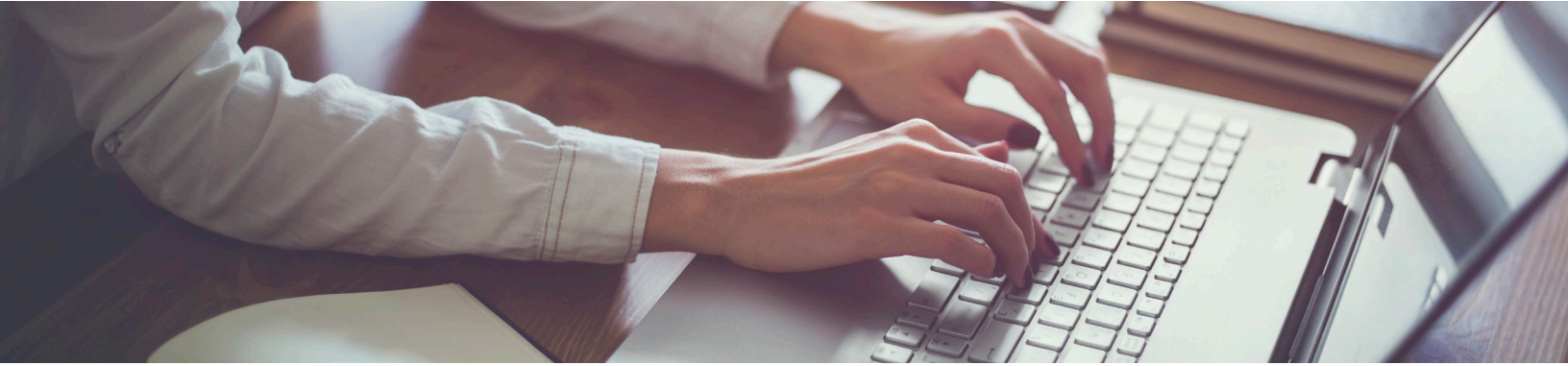
- This course will give application developers and report writers the skills to create complex reports and integrate IFS with other applications at the database level using Oracle objects. Any IFS developer on your staff would benefit from this class. Through hands-on instruction you'll learn to develop stored procedures, functions, packages, and more to extend and customize the functionality of your IFS system.
- Prerequisites: None
- Format: Instructor Led Training Only

DSI 512: Advanced Oracle PL/SQL Programming for IFS Applications

- This course will teach experienced PL/SQL application developers advanced methods to integrate IFS with other applications at the database level using Oracle objects, IFS message tables and IFS API sets. Any IFS developer on your staff responsible for developing integrations with your IFS system would benefit from this class. Through hands-on instruction, learn to develop stored procedures, functions and packages to manage IFS objects.
- Prerequisites: DSI 511: Oracle PL/SQL Programming for IFS Applications highly recommended
- Format: Instructor Led Training Only

DSI 521: IT/DBA Admin Training for IFS

- This course will give your IFS Systems Administrators the skills to manage and monitor your IFS infrastructure. Any IFS Systems Administrator on your staff would benefit from this class. This class is tailored for your specific version of IFS and your IT infrastructure.
- Prerequisites: None
- Format: Onsite at customer site ONLY



Multimedia Learning Module (MLM) Library

Multimedia Learning Modules (MLMs) are Self-Paced Online, non-certified educational opportunities that cover a wide range of DSI products and features. Please note that these modules are developed at different times and may cover the feature(s) in question on a different version of the product from other MLMs. Current MLMs range from the DSI Platform 8.2 through 9.0.

MLM - 8.5 Cloud Administration

MLM - Advanced Wire UI

MLM - App Analytics

- Subscriptions: EPP or Any active subscription

MLM - Application Change Control

- Subscriptions: EPP or Any active subscription

MLM - Cloud Inventory 2019.1 Update

MLM - Cloud Inventory 2019.2 Update

MLM - Configuring Applications

- Subscriptions: EPP or Any active subscription

MLM - Database Connection Strings

- Subscriptions: EPP or Any active subscription

MLM - Device Tracker

- Subscriptions: EPP or Any active subscription

MLM - Installing Multiple Mobile Clients

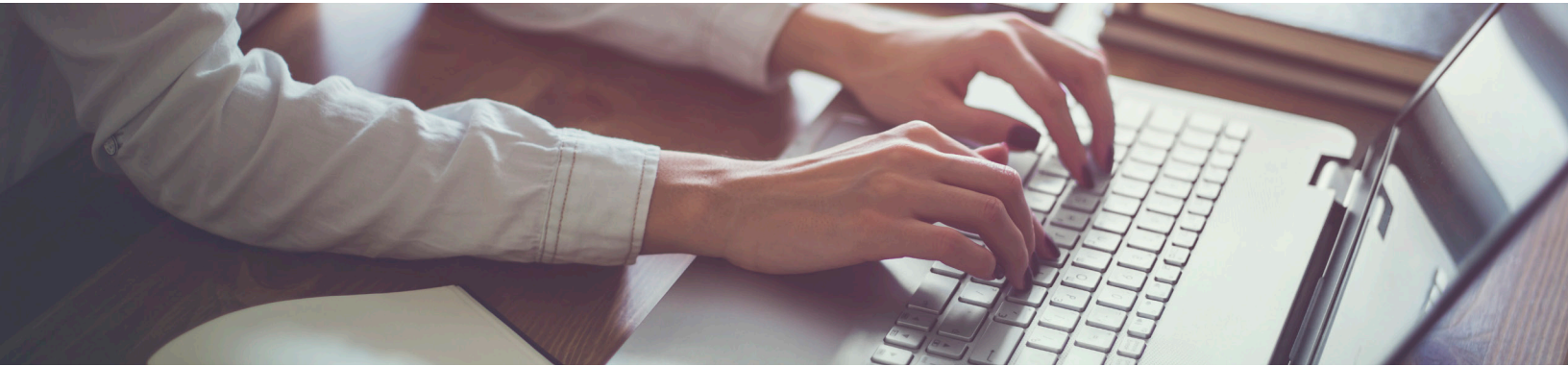
- Subscriptions: EPP or Any active subscription

MLM - JDE EnterpriseOne UDC Configuration

- Subscriptions: EPP or Any active subscription

MLM - Keyed Values Overview

- Subscriptions: EPP or Any active subscription



Multimedia Learning Module (MLM) Library Continued

MLM - LDAP Configuration

- Subscriptions: EPP or Any active subscription

MLM - On\Off Network App Development

- Subscriptions: EPP or Any active subscription

MLM - Platform 9.0 Update

- Subscriptions: EPP or Any active subscription

MLM - Platform Data Replication

- Subscriptions: EPP or Any active subscription

MLM - Platform Overview

- Subscriptions: EPP or Any active subscription

MLM - Platform Server Specifications

- Subscriptions: EPP or Any active subscription

MLM - Platform Troubleshooting Overview

MLM - Sketch to Wire

MLM - Styles Overview

- Subscriptions: EPP or Any active subscription